



Newsletter

Police and Crime Commissioner for Leicester, Leicestershire and Rutland

IN THIS ISSUE



New Stop & Search Powers.
See page 2.



Tough action on fly tipping.
See page 3



Rural Policing Team recover £1,000,000.
See page 4



Keeping us All Safe in Leicestershire

We rely on the police to keep us safe. But they cannot do their job properly unless they enjoy the trust, confidence and support of us: the public.

But this trust and confidence has been slipping.

I know that people are disgusted by the dreadful actions of a very few police officers. However, the vast majority are totally committed to keeping us safe. I recognise that many feel that sentencing should be swifter and harsher – but that is not a matter for the police.

As Police and Crime Commissioner, I know that the force works long and hard to keep us all safe. They put themselves into the line of danger on a daily basis.

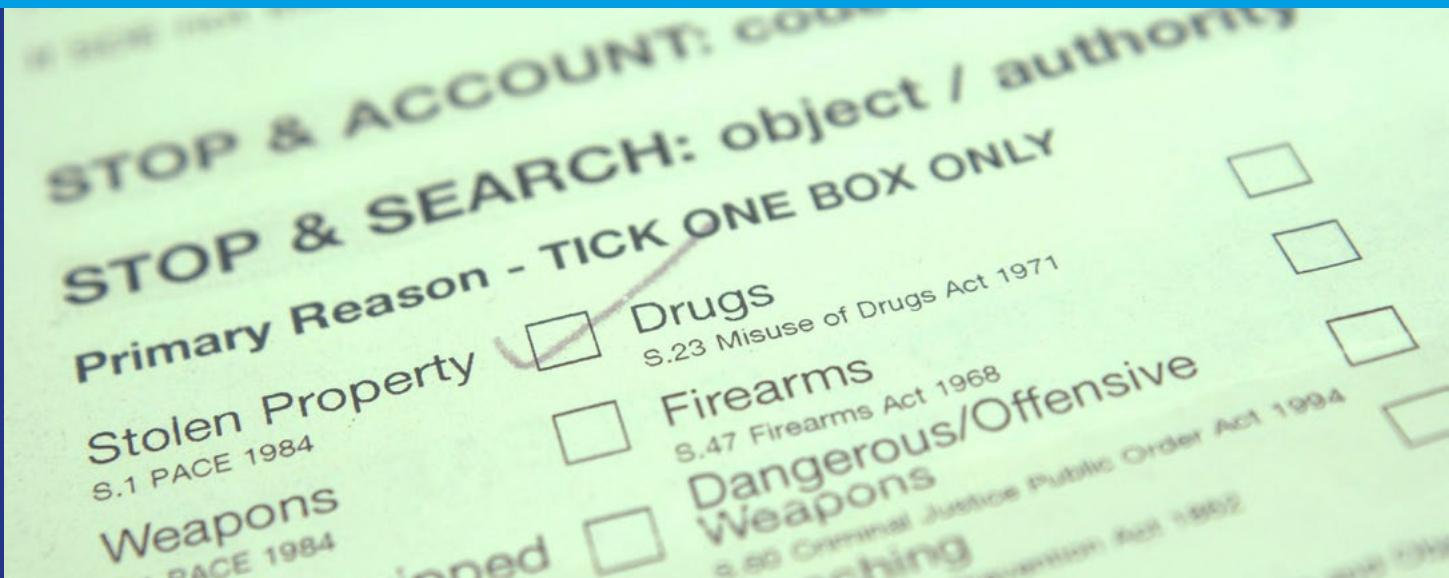
So what are we doing? As my Police and Crime Plan

says, we need to concentrate on the things that make our communities safer:

- Visible policing to deter criminals;
- Neighbourhood policing to support local residents and businesses;
- Tackling anti-social behaviour;
- Putting resources where they will make the most difference;
- Getting the police into the heart of our communities.

I'm pleased to say that these priorities are working. Leicestershire Police is rated as excellent, even outstanding in some areas.

And I know that with your support we will strengthen trust and confidence in the Leicestershire Police.



New Stop and Search Powers

I am delighted to be able to announce a ramping up of stop and search powers for the police to keep the public safe.

Protecting law-abiding citizens is my top priority. Any action that can help prevent the tragic loss of life and keep our communities safe is to be welcomed.

Stop and search is a highly effective policing tool helping to rid our streets of dangerous weapons and the scourge of drugs in our communities. The public expect to see police officers taking a strong and robust approach to these problems – and so do I.

People across Leicestershire, especially families with young

children or teenagers, will welcome these measures.

Of course, I have also put in place measures to maintain the highest ethical standards. Independent scrutiny processes ensure officers act with fairness and integrity at all times in the execution of these powers.

Community groups share almost £60k

The "People Zones" organised from my office bring together robust police action with co-ordinated action by health and welfare services as well as action by local community groups – all to improve security in three of our most deprived areas: Bell Foundry, New Parks and Thringstone & Whitwick.

Over the past few months I have been able to fund projects run by nine voluntary groups to the tune of £60,000 to help prevent crime and anti-social behaviour.

The funding has been awarded to the following organisations or projects delivered in this financial year:

- 10th Loughborough Rainbows and Brownies
- New Parks Men's Shed
- GNR8
- New Parks Adventure Playground
- White House Allotments
- An Nakhlah Academy
- Charles Booth Centre
- Whitwick Scouts Group



OUT & ABOUT

I spend one day each week out in the community. It is an essential part of my job to meet local residents, find out what they want and then translate that into action.



Oadby & Wigston



Blaby



Melton Mowbray



Rothley



Coalville



Cropston



Hinckley



Blackfordby



Market Harborough

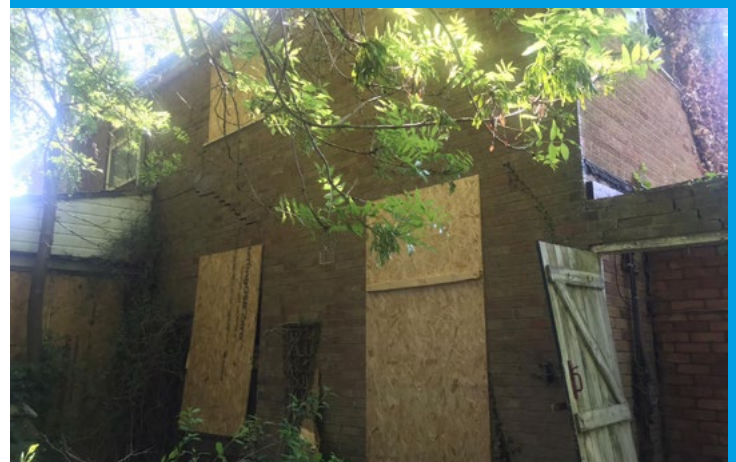
TOUGH ACTION ON FLY-TIPPING

I am backing robust national action to crackdown on fly-tipping and will be looking to launch local initiatives to back this up. Fly-tipping has a serious impact on community life and costs the UK economy millions of pounds every year. We need to send a strong and clear message to offenders that this behaviour will not be tolerated and that the penalties awaiting those caught for such offending are severe.



ANTI-SOCIAL BEHAVIOUR AWARENESS WEEK 2023

During July's ASB Awareness Week, I publicised ways in which victims can safeguard themselves and their property. I want to highlight the ASB Case Review scheme for those who have reached crisis point with persistent ASB. This system brings together all parties for the delivery of robust and decisive action to tackle the root problems and deliver lasting respite. If you are affected by ASB, please don't hesitate to reach out for help.





Rural Policing Team recover £1million of stolen property

A specialist team tasked with keeping rural communities across Leicestershire and Rutland safe has hit the £1m mark in stolen property recovery – in just 12 months.

I bolstered the force's Rural Crime Team from three to eight officers last June, allowing the taskforce deliver outstanding results.

Our rural communities deserve robust policing, and that is something I have put into sharp focus since I was elected as Commissioner. In June, my Deputy PCC, Rani Mahal, and I attended a national Rural Policing Summit to represent Rutland and to bring back ground breaking ideas on tackling fly tipping, speeding, farm theft and livestock crime.

Safety for horse and bike riders on our rural roads

I recently joined the Safer Roads Team, Mounted Volunteers and Fire Service to carry out 'close passing' checks on our rural roads.

New changes in the Highway Code require motorists to pass horse and bike riders with at least two metres of space.

During the police operation, any vehicle deemed to pass inappropriately was stopped. The driver was offered the opportunity to be educated by Hazard Express – a virtual reality training tool – as an alternative to prosecution.

Close passing is a persistent issue in our rural communities and this action day was part of the ongoing drive to tackle these concerns.



Keep in touch

Please do not hesitate to get in touch at any time using these contact details:

Email: opcc@leics.police.uk | Telephone: 0116 229 8980
Website: www.leics.pcc.police.uk

Please note we are unable to take details of crimes or incidents.

If you need to contact the police please either call 999 if it is an emergency, or dial 101 if it is a non-emergency.

You can also keep up to date with my day to day work via Twitter, Facebook, Instagram and my weekly blog.



@LeicsPCC



@LeicsPCC



@LeicestershireOPCC